

CORRECTED TYPE RESPONSE (IS EXAM 2024/2025)

Exercise 1

(2.5 Points)

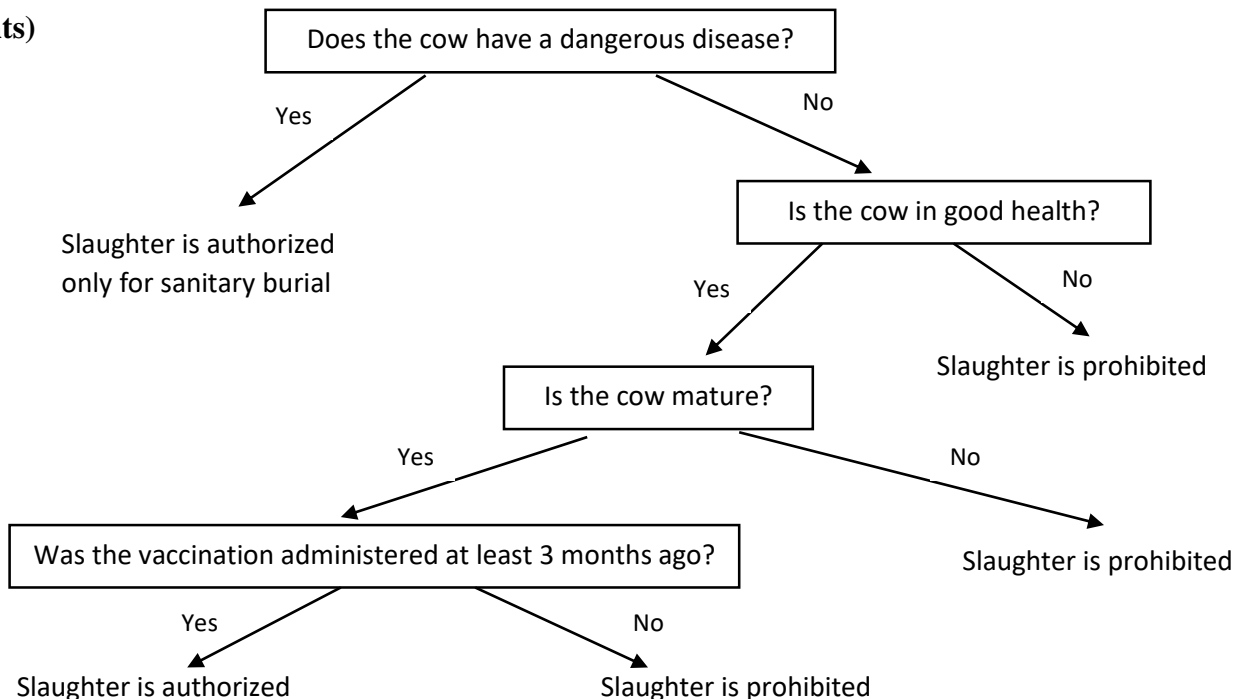
		RULES															
CONDITIONS	Good health	T	T	T	T	T	T	T	T	T	F	F	F	F	F	F	F
	Dangerous disease	T	T	T	T	F	F	F	F	T	T	T	T	F	F	F	F
	Vaccination before 3 months	T	T	F	F	T	T	F	F	T	T	F	F	T	T	F	F
	Mature	T	F	T	F	T	F	T	F	T	F	T	F	T	F	T	F
ACTIONS	Slaughter is authorized					X											
	slaughter is authorized only for sanitary burial	X	X	X	X						X	X	X	X			
	slaughter is prohibited							X	X	X					X	X	X

(2.5 Points)

		RULES			
CONDITIONS	Good health	=	F	T	T
	Dangerous disease	T	F	F	F
	Vaccination before 3 months	=	=	F	=
	Mature	=	=	=	F
ACTIONS	Slaughter is authorized				
	slaughter is authorized only for sanitary burial	X			X
	slaughter is prohibited		X	X	

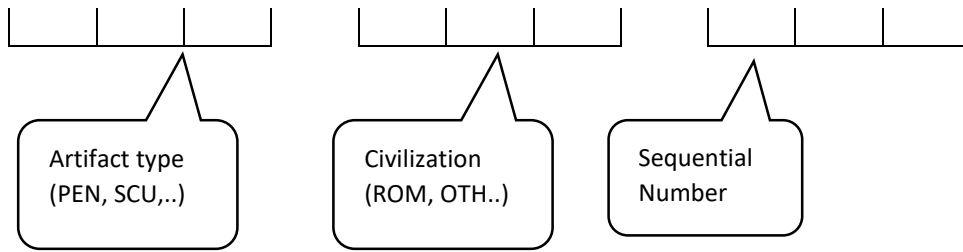


(2 Points)



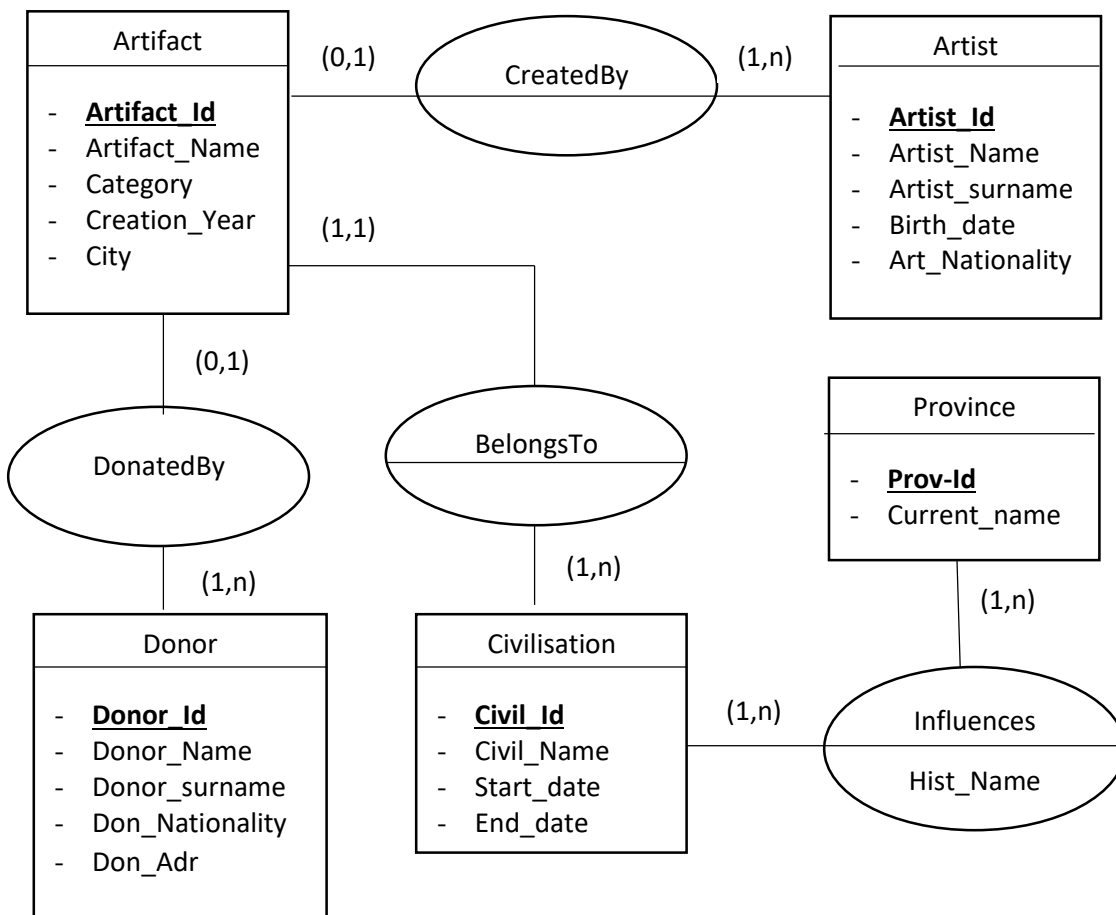
Exercise 2

1. The proposed codification (1 Pt.)



This codification is **Articulated (0.5 P)**

2. Conceptual Data Model (5 Pts.)



Each entity: **0.5 points**

Each association with its cardinalities: **0.5 points**, except for the "Influence" association, which is **1 point**.

3. Logical Data Model (3.5 Pts.)

Artifact (Artifact Id, Artifact_Name, Category, Creation_Year, City, Artist Id*, Civil Id*, Donor Id *) (0.75 Pt.)

Artist (Artist Id, Artist_Name, Artist_surname, Birth_date, Art_Nationality) (0.5 Pt.)

Civilisation (Civil Id, Civil_Name, Start_date, End_date) (0.5 Pt.)

Donor (Donor Id , Donor_Name, Donor_surname, Don_Nationality, Don_Adr) (0.5 Pt.)

Province (Prov-Id, Current_name) (0.5 Pt.)

Influences (Civil Id, Prov-Id, Hist_Name) (0.75 Pt.)

4. Conceptual Process Model (3 Points)

